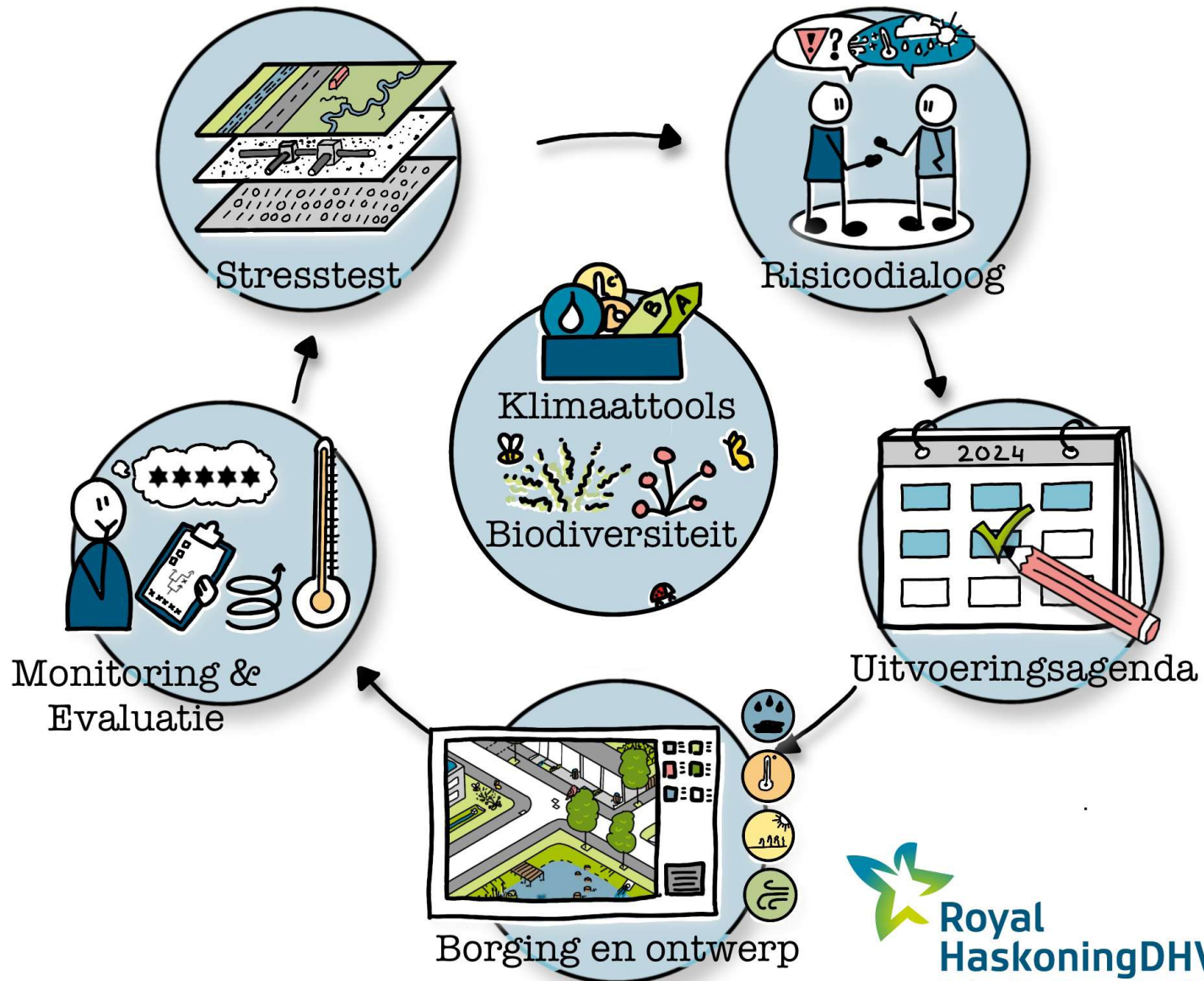
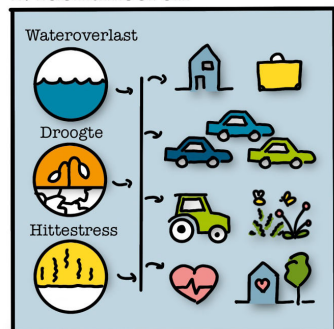


Klimaatadaptatie



Klimaat Impactanalyse

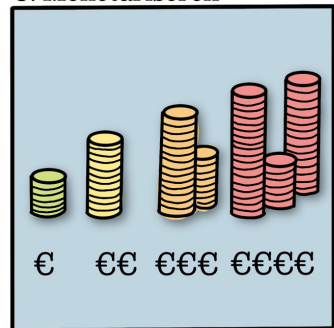
1. Identificeren



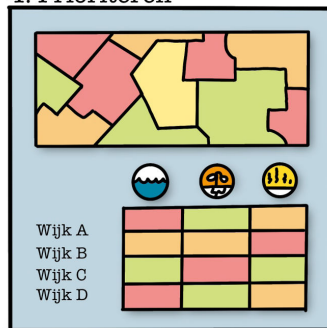
2. Kwantificeren



3. Monetariseren



4. Prioriteren

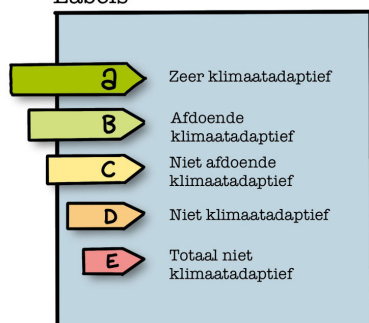


Royal Haskoning DHV.com

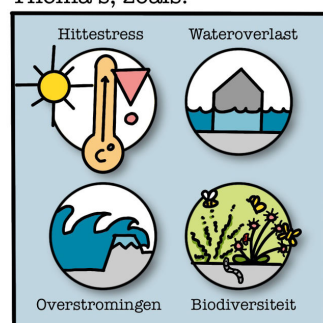
Notities

Klimaatlabels

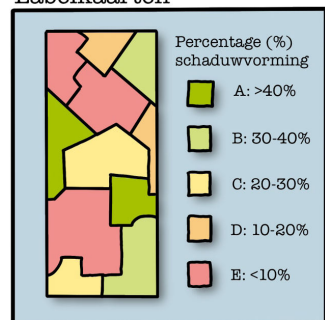
Labels



Thema's, zoals:



Labelkaarten



Paspoort

Thema	Huidig	Ambitie
Hittestress	E	B
Wateroverlast	A	A
Overstromingen	E	B
Biodiversiteit	C	B
	D	B

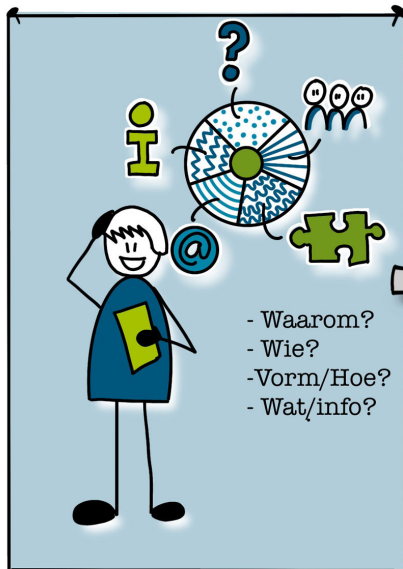
Notities

Biodiversiteit



Risicodialoog

Voorbereiden

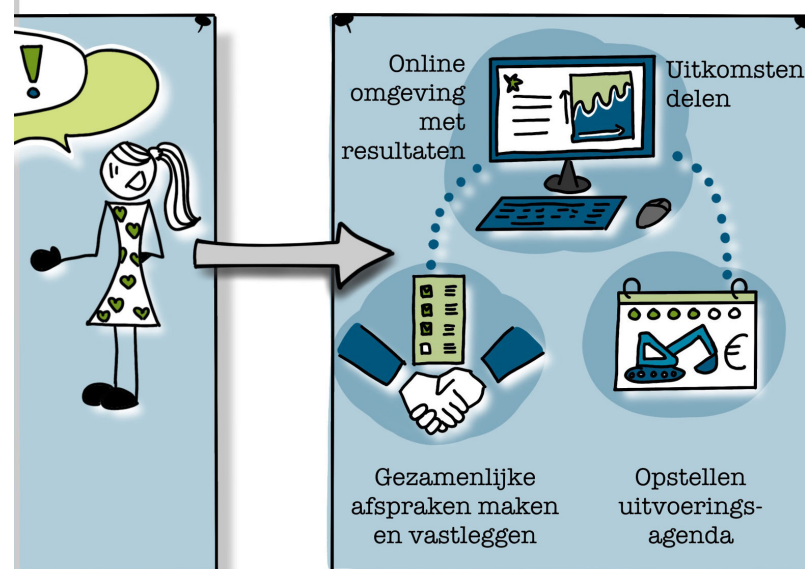


Voeren



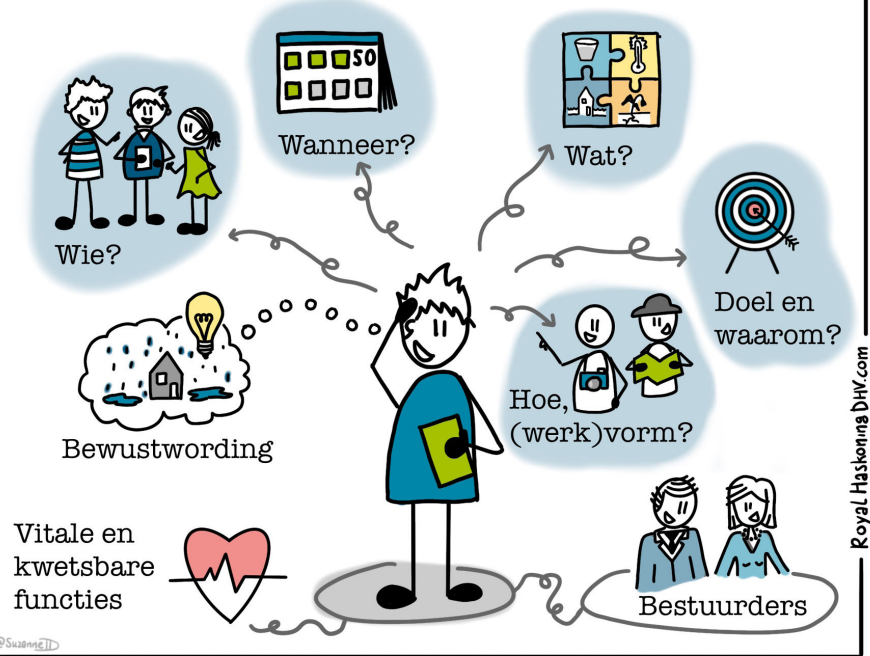
Route

Afronden



Risicodialoog

- voorbereiding -



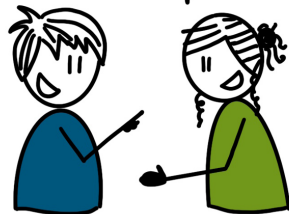
Notities

Risicodialoog

- voeren -



- Intern en extern
- Setting creëren



Draagvlak
bestuurders

Royal Haskoning DHV.com

Notities

Risicodialoog

- afronden -



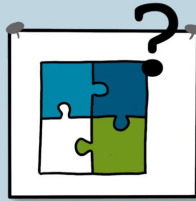
Royal Haskoning DHV.com

Notities

Uitvoerings-agenda



Wie?



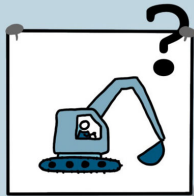
Wat?



Waar?



Meekoppelkansen?



Hoe?



Kosten/
baten

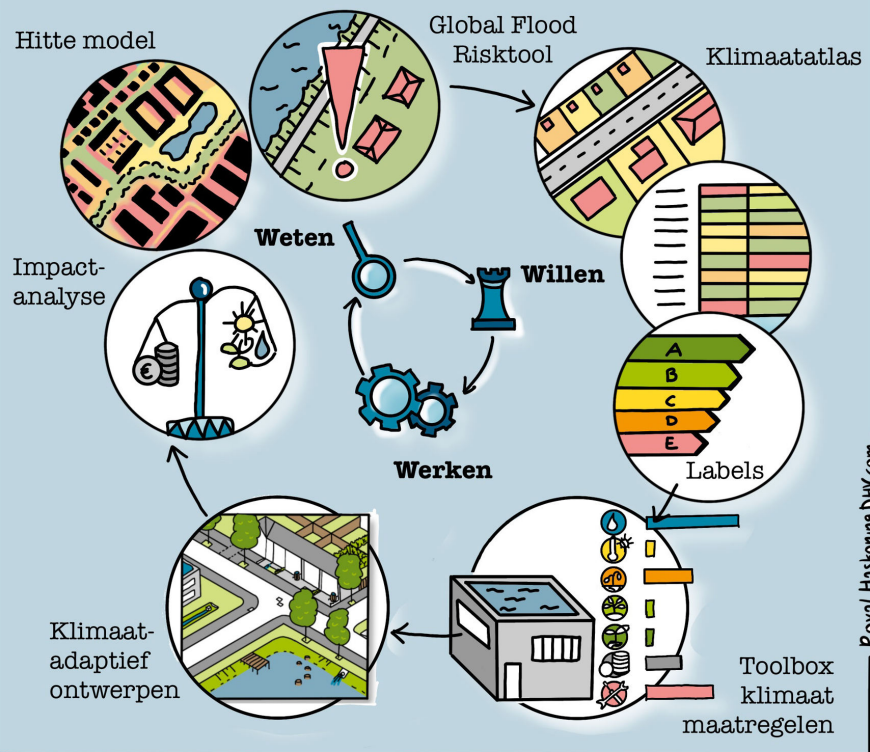


Wanneer?

Royal Haskoning DHV.com

Notities

Klimaattools



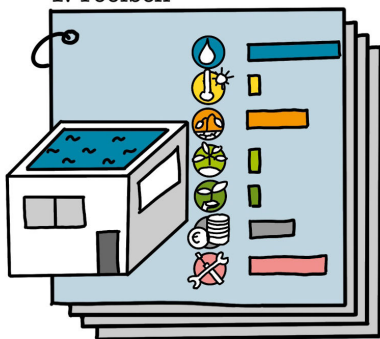
Suzanne Duurgms - Feb 2021

Royal Haskoning DHV.com

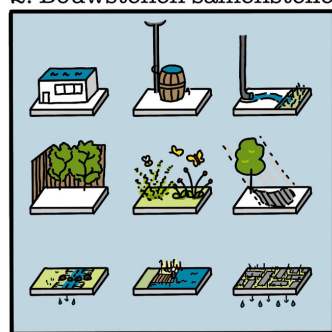
Notities

Klimaatadaptatief Ontwerpen

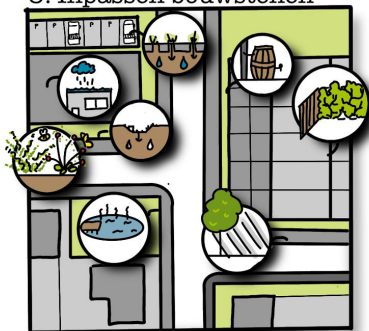
1. Toolbox



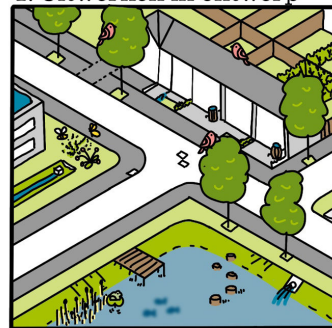
2. Bouwstenen samenstellen



3. Inpassen bouwstenen



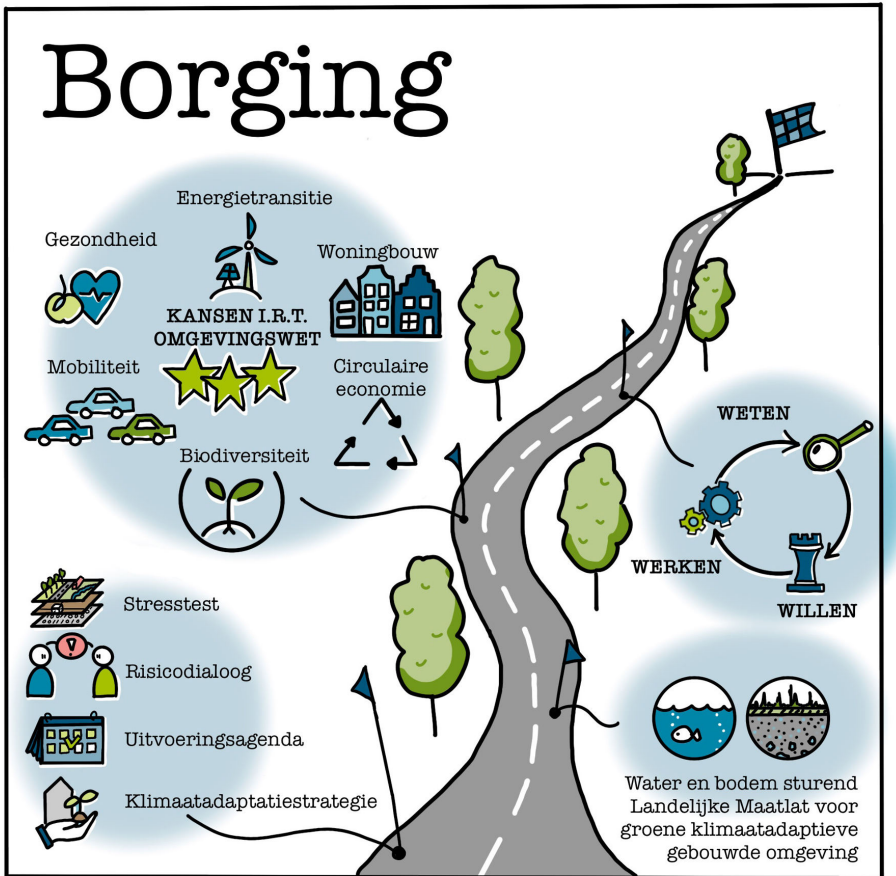
4. Uitwerken in ontwerp



Royal Haskoning DHV.com

Notities

Borging



Notities

Monitoring & evaluatie

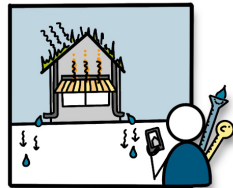
1. Monitoring van het proces

Doen we wat is afgesproken?



2. Monitoring van de effecten

Wat zijn de effecten van de maatregelen in de praktijk?



3. Monitoring van het systeem

Liggen we op koers?



Royal Haskoning DHV.com

Notities

Klimaatadaptief inrichten - RoyalHaskoningDHV

<https://www.royalhaskoningdhv.nl/nl-nl/challenges/toekomstbestendig/klimaatadaptief-inrichten>

Homepage Klimaatadaptatie - RHDHV - royalhaskoningdhv.com

<https://klimaatadaptatie.ireport.royalhaskoningdhv.com/>

